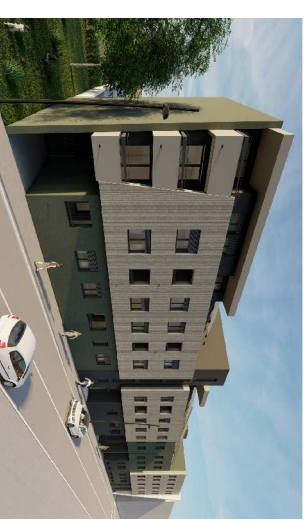


## osnova stana br. 35 potkrovlje

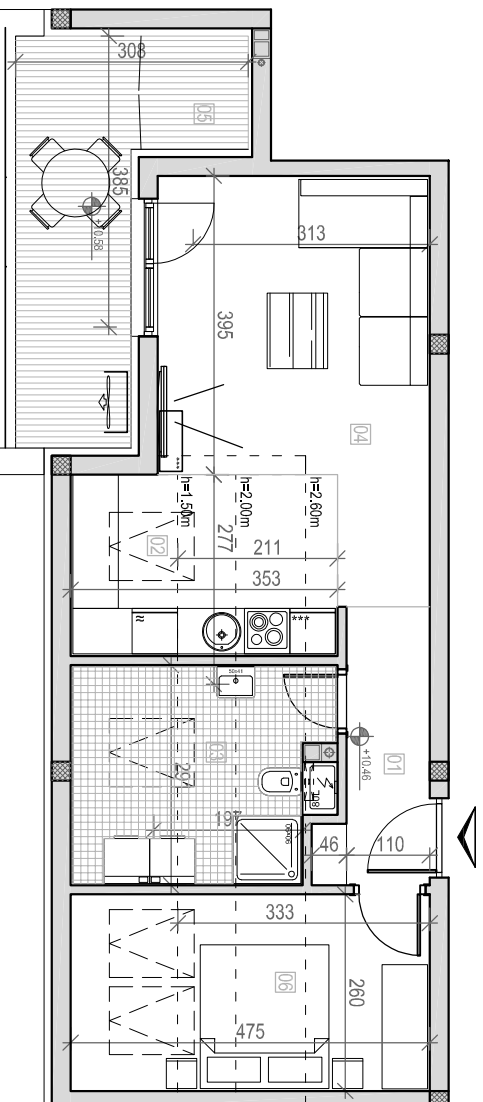
### STAMBENA ZGRADA

#### Po+P+2+Pk

Novi Sad, Ul. Dorda Rajkovića 32 - 38  
 K.P. 8496 - 8493, K.O. Novi Sad I



POTKROVLJE		
STAN BR.	35	
br	prostorija	površina/m <sup>2</sup>
01	ULAZ	4,30
02	KUHINJA	4,64
03	KUPATILO	5,71
04	DN. SOBA	16,60
05	LOBA	10,86
06	SP.SOBA	8,67
	<b>UKUPNO</b>	<b>50,78</b>



**LEGENDA SIMBOLA:**

	KANALIZACIONA VERTIKALA
	VENTILACIONI KANAL
	UNUTRAŠNJA JEDINICA KLIME
	SPOLJNA JEDINICA KLIME

