

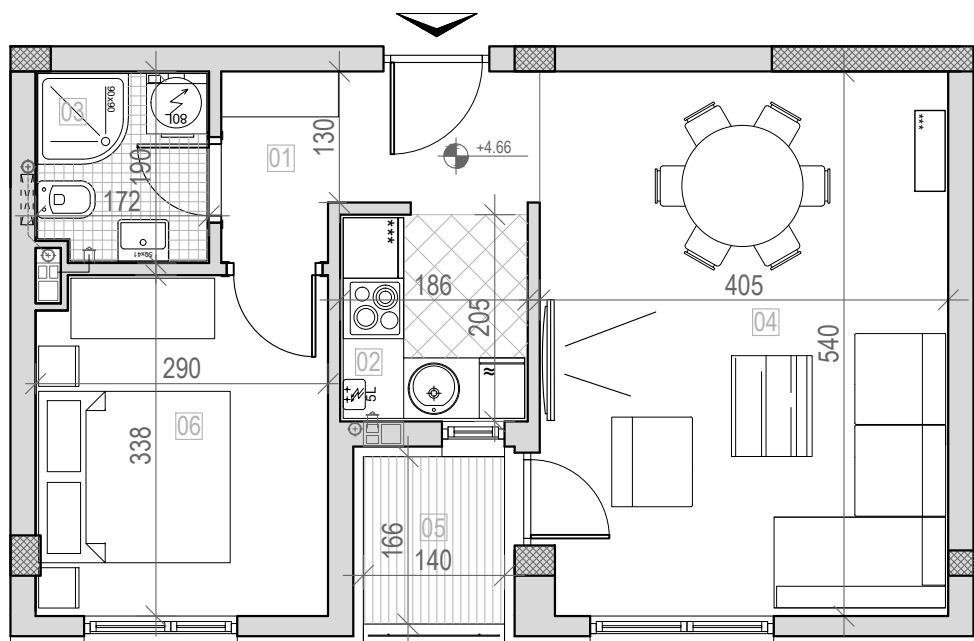
osnova stana br. 09
 I sprat

STAMBENA ZGRADA

Po+P+2+Pk

Novi Sad, Ul. Đorđa Rajkovića 32 - 38



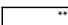

K.P. 8496 - 8493, K.O. Novi Sad I



I SPRAT		
STAN BR. 9		
br	prostorija	površina/m ²
01	ULAZ	4,72
02	KUHINJA	3,81
03	KUPATILO	3,20
04	DN. SOBA	21,77
05	LOĐA	2,32
06	SP. SOBA	9,69
	UKUPNO	45,51



LEGENDA SIMBOLA:

-  KANALIZACIONA VERTIKALA
-  VENTILACIONI KANAL
-  UNUTRAŠNJA JEDINICA KLIME
-  SPOLJNA JEDINICA KLIME

